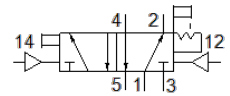
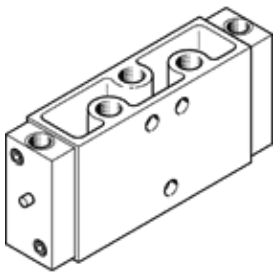


pneumatic valve JH-5-1/2

Part number: 10165

FESTO



Data sheet

Feature	Value
Valve function	5/2 bistable
Type of actuation	pneumatic
Width	52 mm
Standard nominal flow rate	4,500 l/min
Operating pressure	0 ... 10 bar
Design structure	Poppet seat
Nominal size	14 mm
Grid dimension	69 mm
Exhaust-air function	throttleable
Sealing principle	soft
Assembly position	Any
Manual override	detenting
Type of piloting	direct
Pilot air supply	external
Flow direction	non reversible
Overlap	Underlap
Pilot pressure	1.2 ... 10 bar
b value	0.3
Max. switching frequency	12 Hz
Switching time reversal	3 ms
Operating medium	Compressed air in accordance with ISO8573-1:2010 [7:4:4]
Note on operating and pilot medium	Lubricated operation possible (subsequently required for further operation)
Corrosion resistance classification CRC	1 - Low corrosion stress
Storage temperature	-20 ... 60 °C
Medium temperature	-10 ... 60 °C
Pilot medium	Compressed air in accordance with ISO8573-1:2010 [7:4:4]
Ambient temperature	-10 ... 60 °C
Product weight	1,130 g
Mounting type	Optional on manifold rail with through hole
Auxiliary pilot air port 12	G1/4
Auxiliary pilot air port 14	G1/4
Pilot air port 12	G1/4
Pneumatic connection, port 1	G1/2
Pneumatic connection, port 2	G1/2
Pneumatic connection, port 3	G1/2
Pneumatic connection, port 4	G1/2
Pneumatic connection, port 5	G1/2
Materials note	Conforms to RoHS
Material seals	NBR TPE-U(PU)
Material housing	Aluminium die cast